

L1801 Label Printer Drive Installation

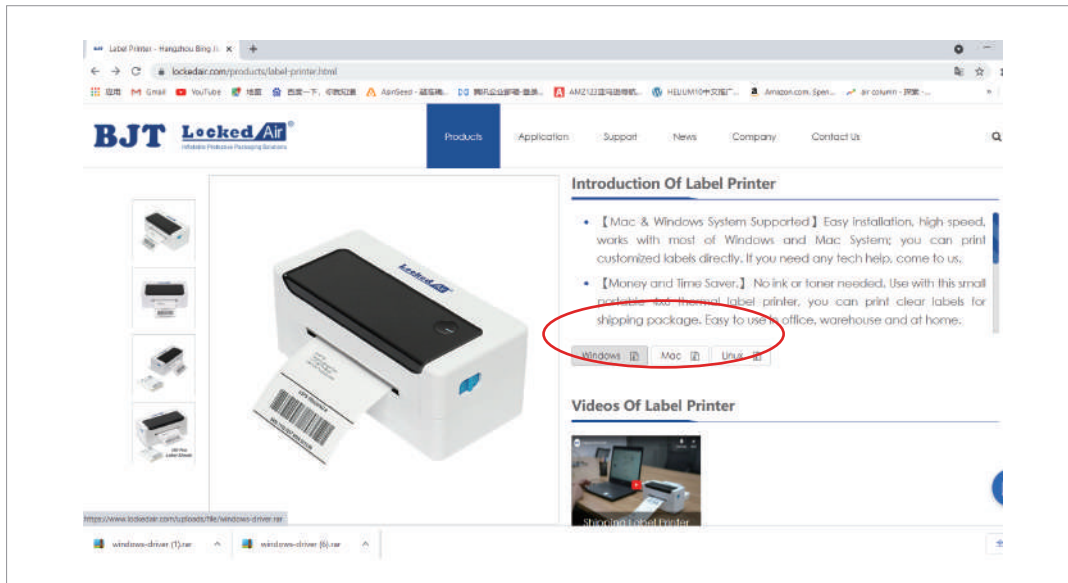


If you need any help, please contact us by amazon or send e-mail to fuwf@lockedair.com

Part 1: Installation for Windows System

Step 1: Close anti-virus software on your computer. This is important.

Step 2: Download the printer driver and installation instruction from Locked Air's official website.

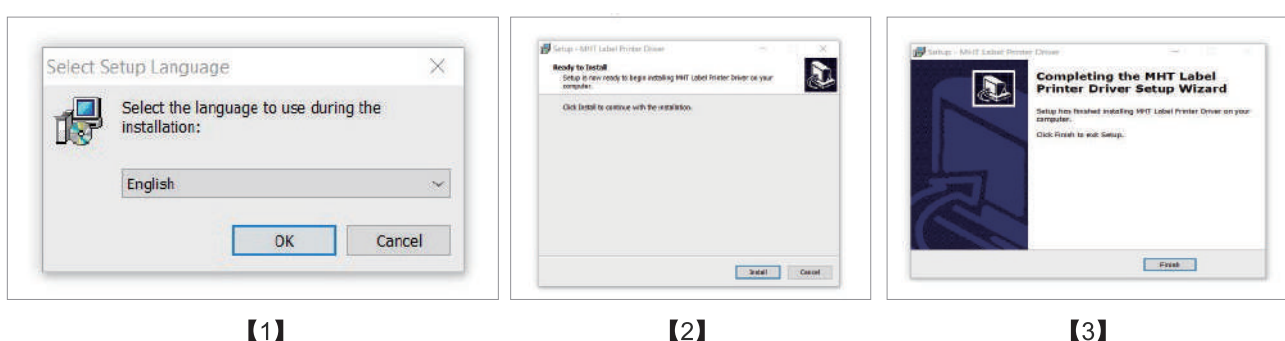


Step 3: Decompressing the file, and double click the exe file

Name	Date modified	Type	Size
windows-driver (1)	12/13/2021 2:40 PM	File folder	
windows-driver (1)	12/13/2021 2:38 PM	360压缩 RAR 文件	3,634 KB

Name	Date modified	Type	Size
label printer tool	10/20/2021 5:05 PM	File folder	
LabelPrinterDriverInstall_V1.01(3)	10/20/2021 5:05 PM	Application	2,457 KB
Test print document-LA	10/20/2021 5:05 PM	WPS PDF 文档	138 KB

Step 4: Choose the language you need and install it step by step, then click "FINISH".

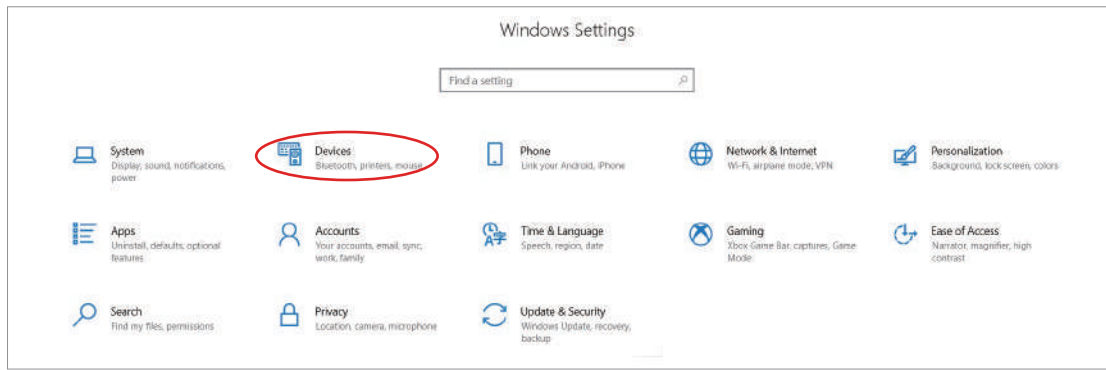


[1]

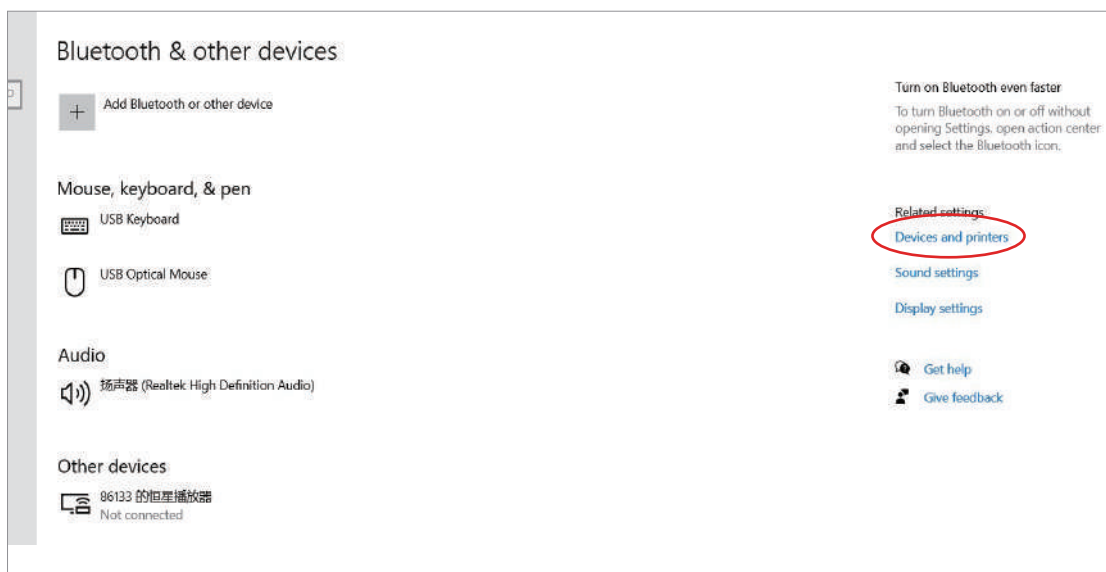
[2]

[3]

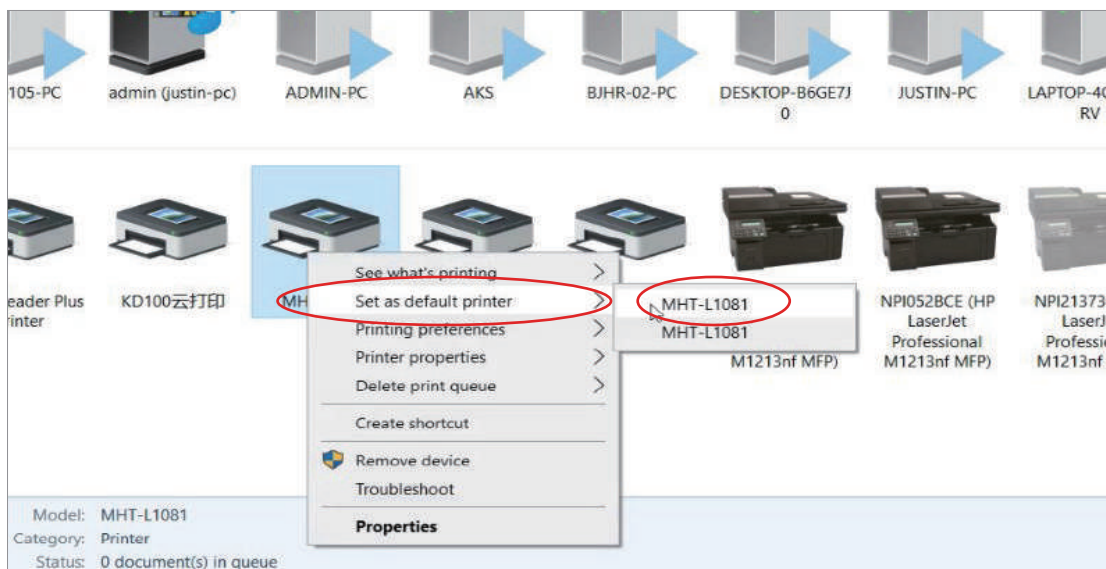
Step 5: Go to the Windows setting and left bottom click the "Devices"



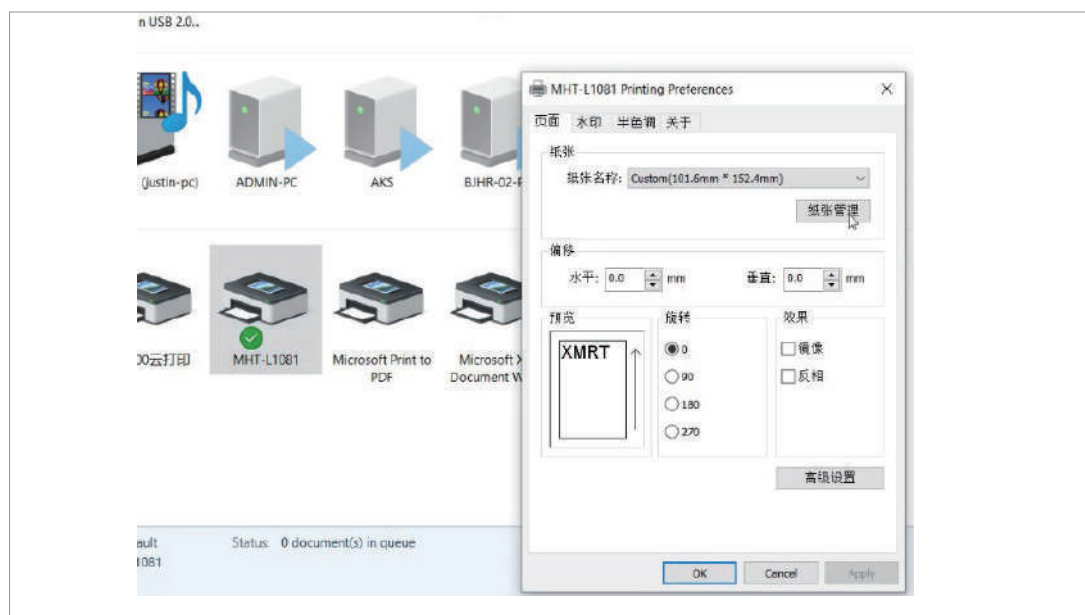
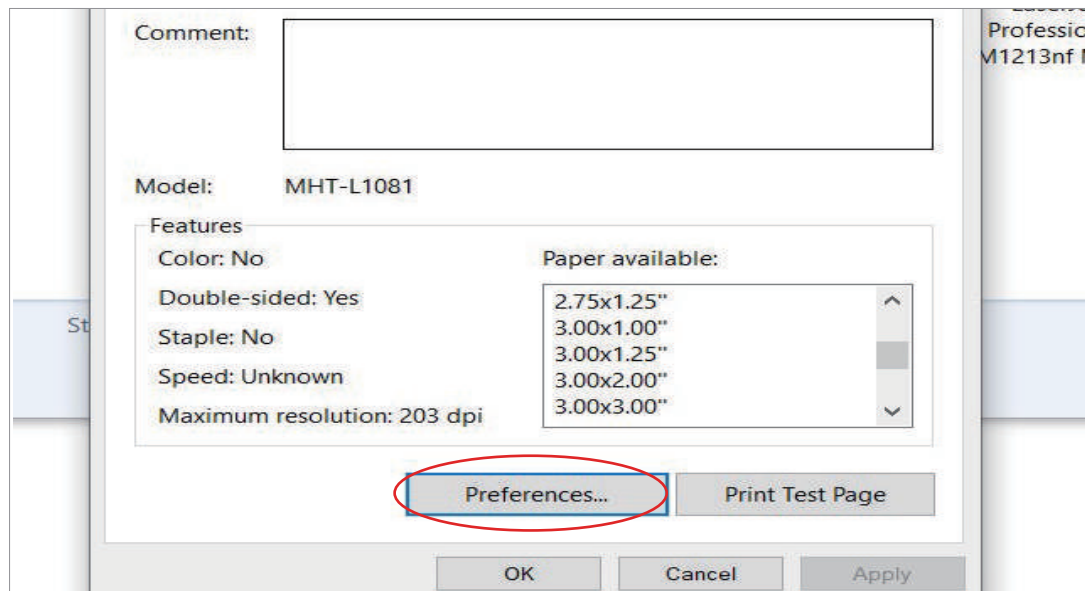
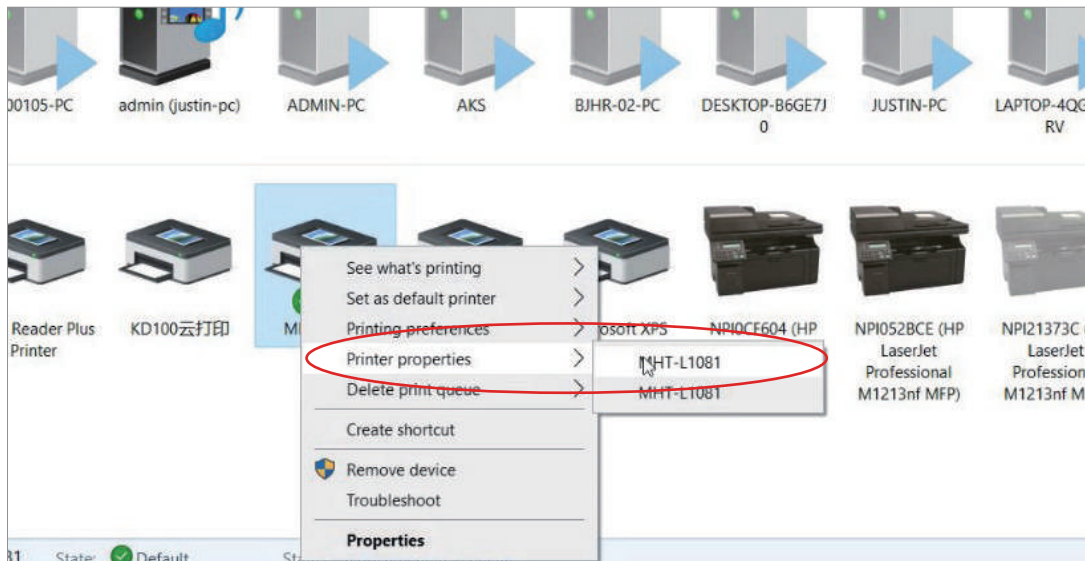
Step 6: Click the "devices and printer".

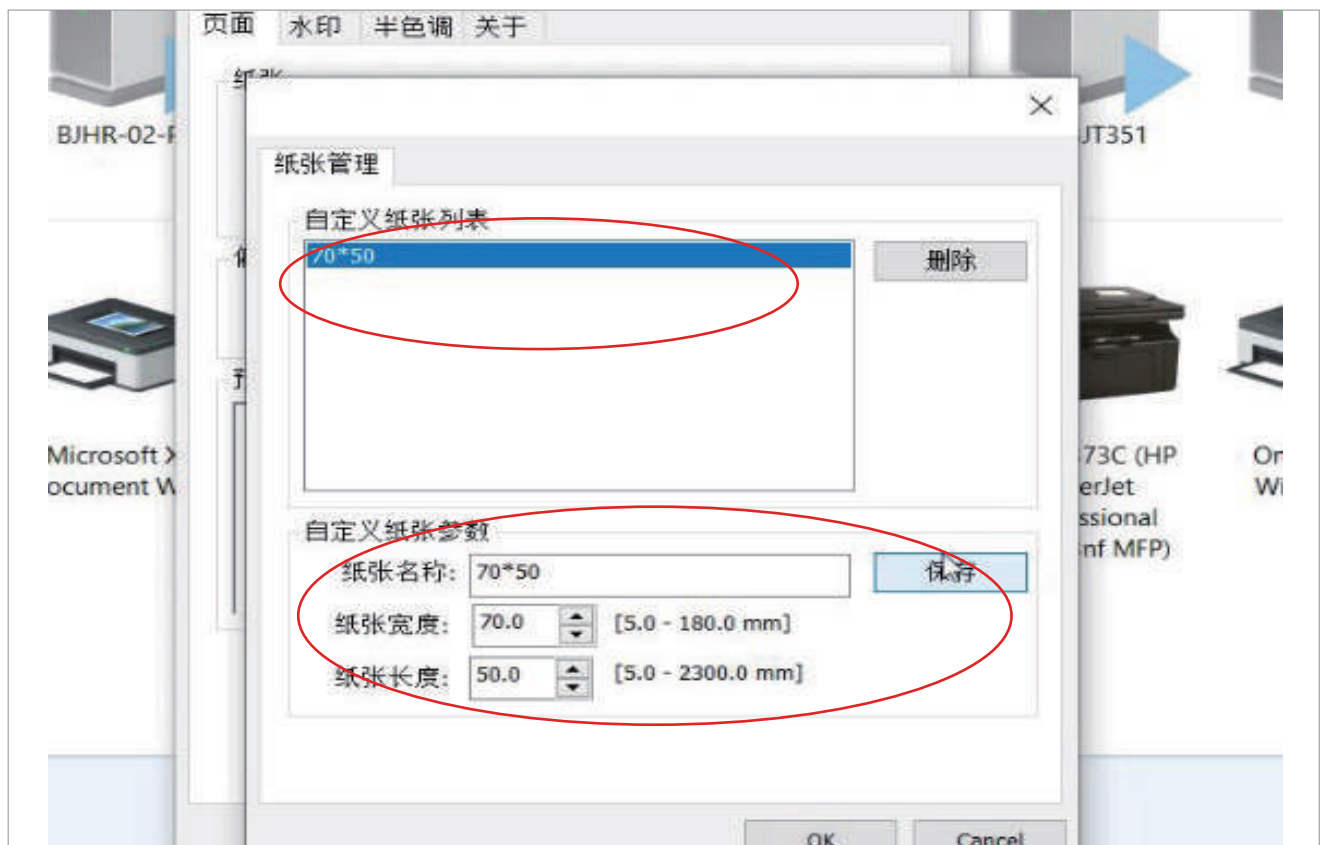
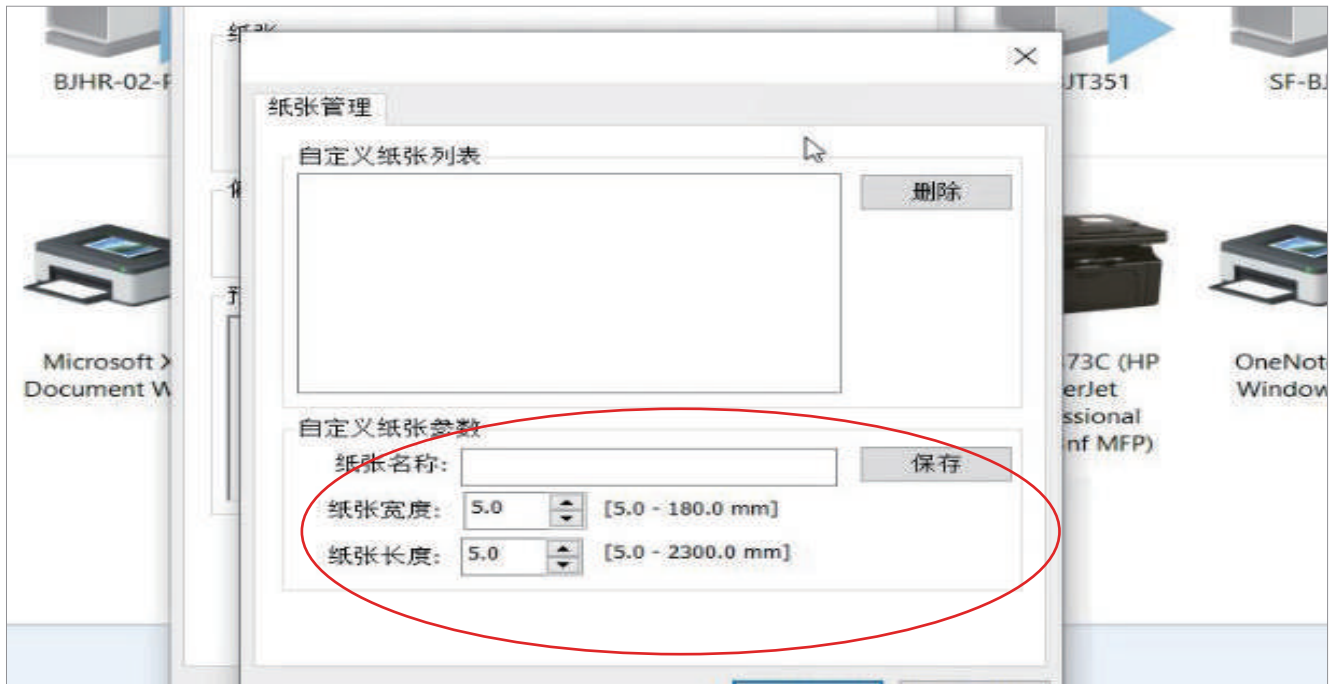


Step 7: Find the printer-L1081, right button click to set it as the default printer

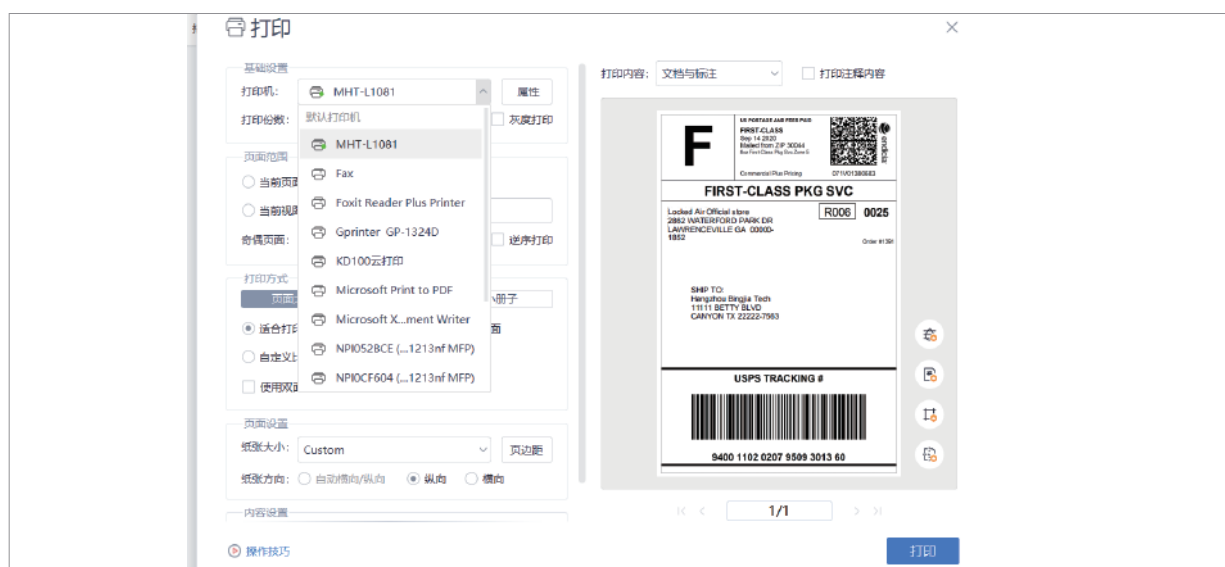
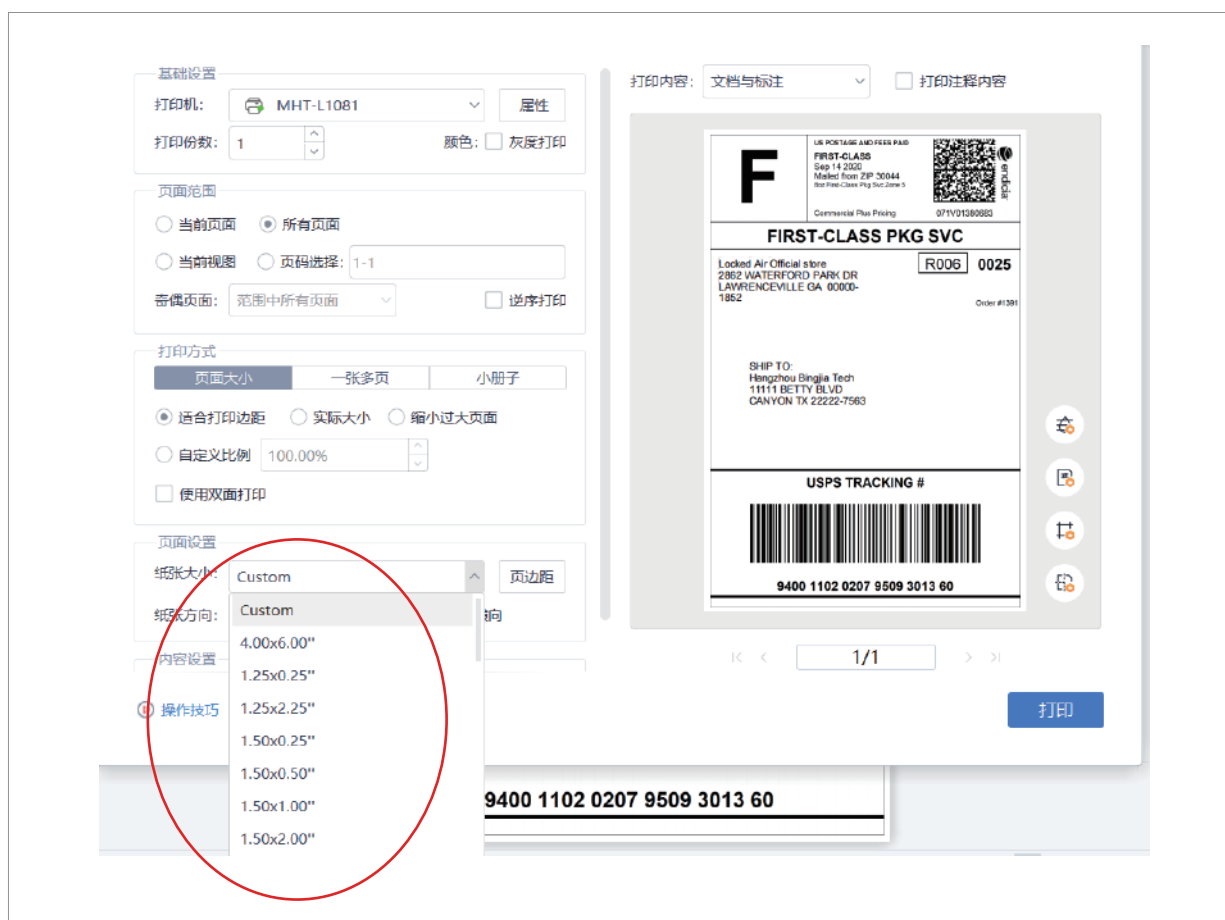


Step 8: Right bottom click the printer L1801, choose printing preference, click paper management,edit/add the paper size(width, length, name) you need and save.





Step 9: Open the file need to print, choose the printer L1801 and the paper size you need, then click to print.

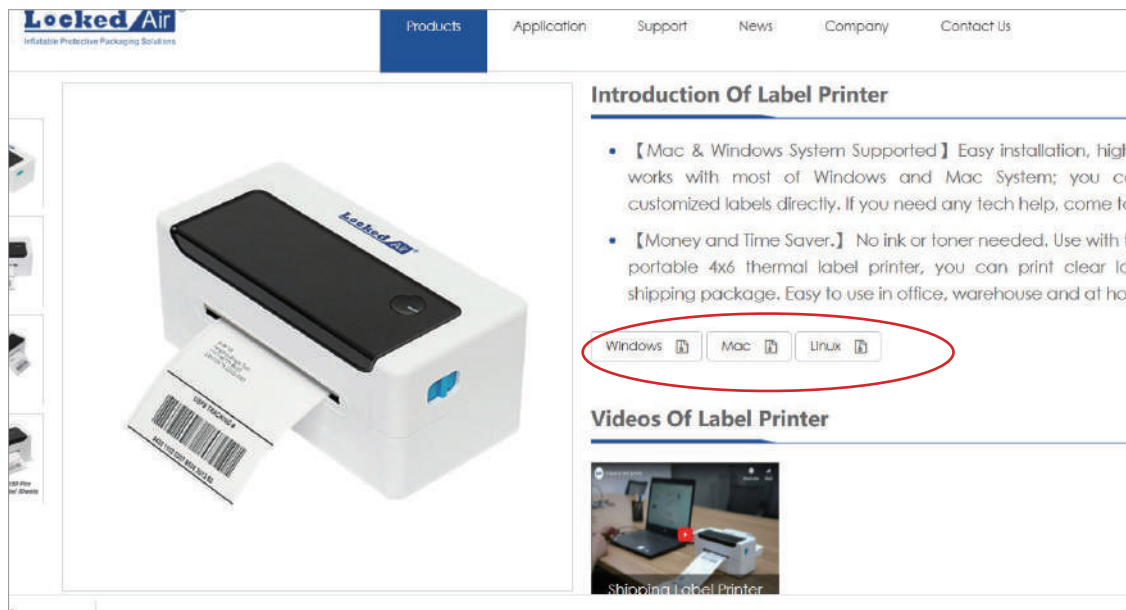


Part 2: Installation for Windows System

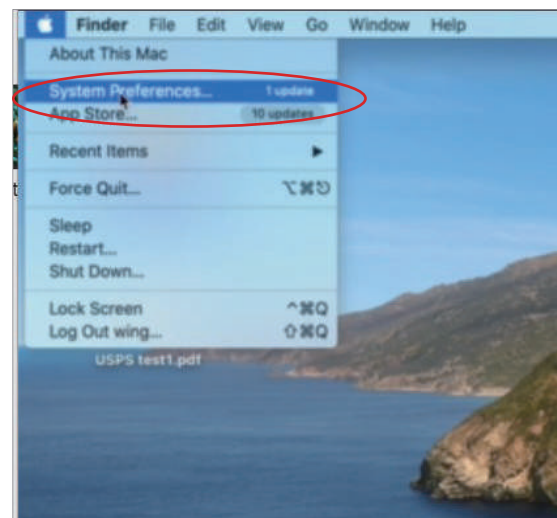
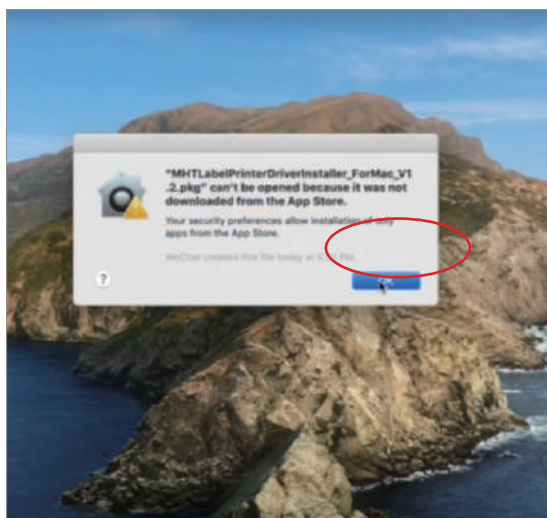
Step 1: Close anti-virus software on your computer. This is important.

Step 2: Connect the printer to your computer and turn on the power switch before installation.

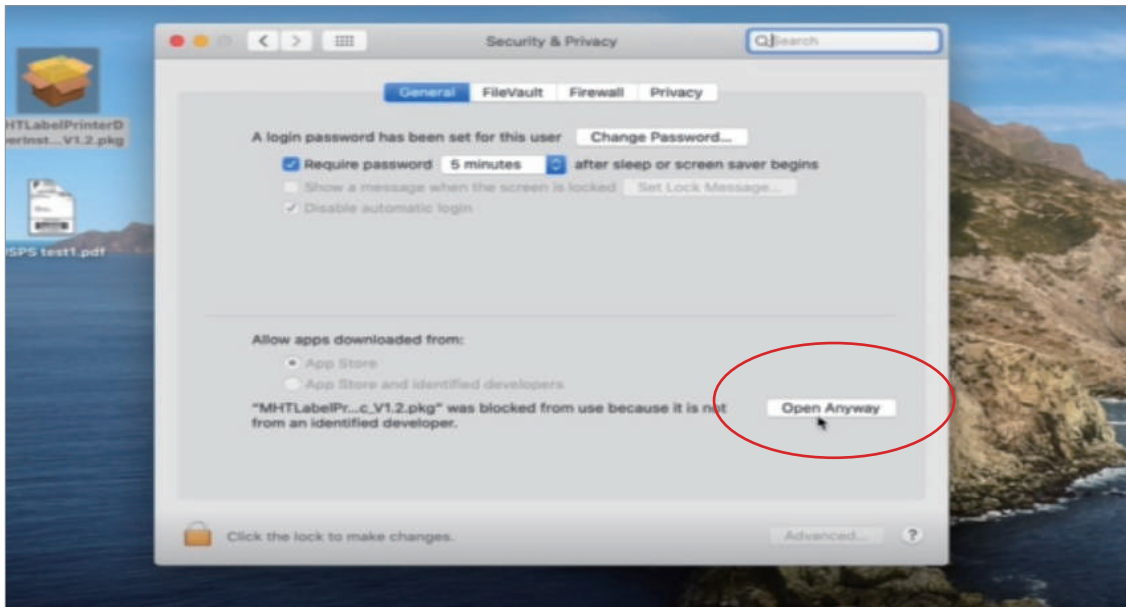
Step 3: Download the printer driver and installation instruction from Locked Air's official website.



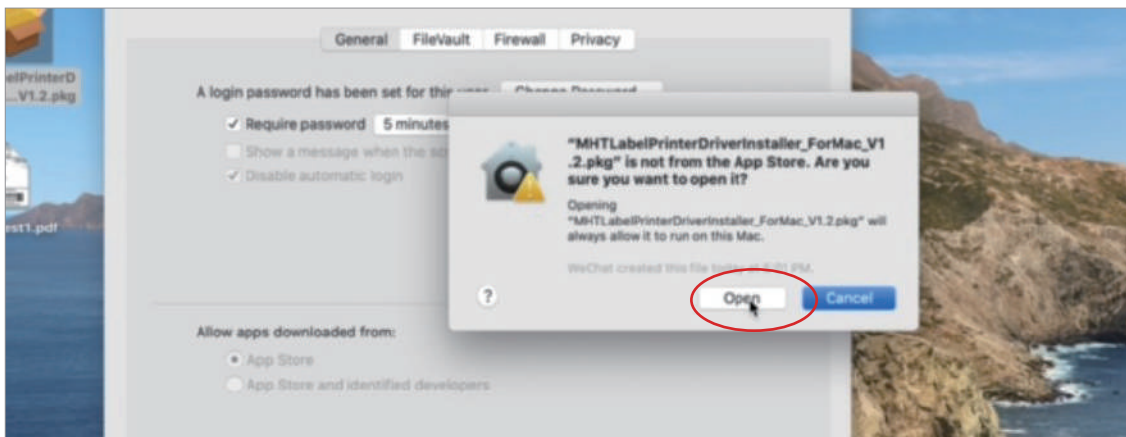
Step 4: The file may be blocked. You need to go to system preferences first.

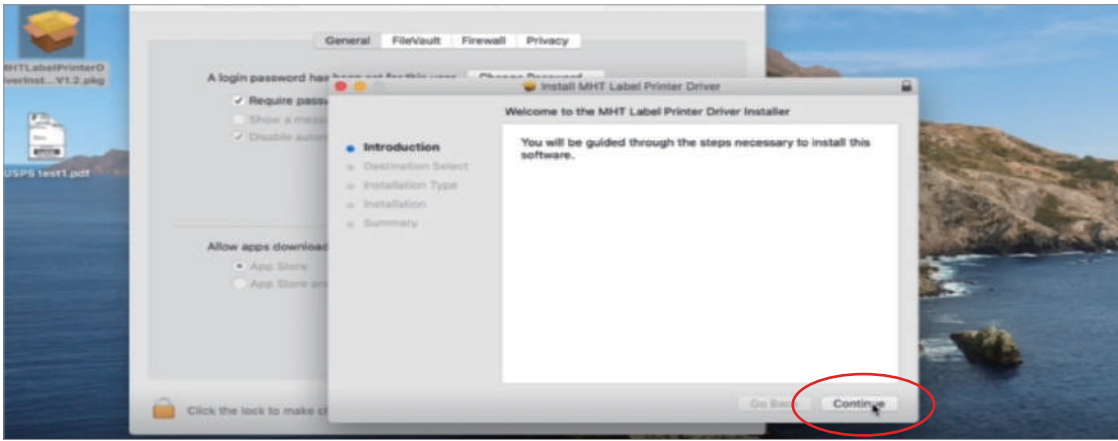


Step 5: Click security and privacy-open anyway.

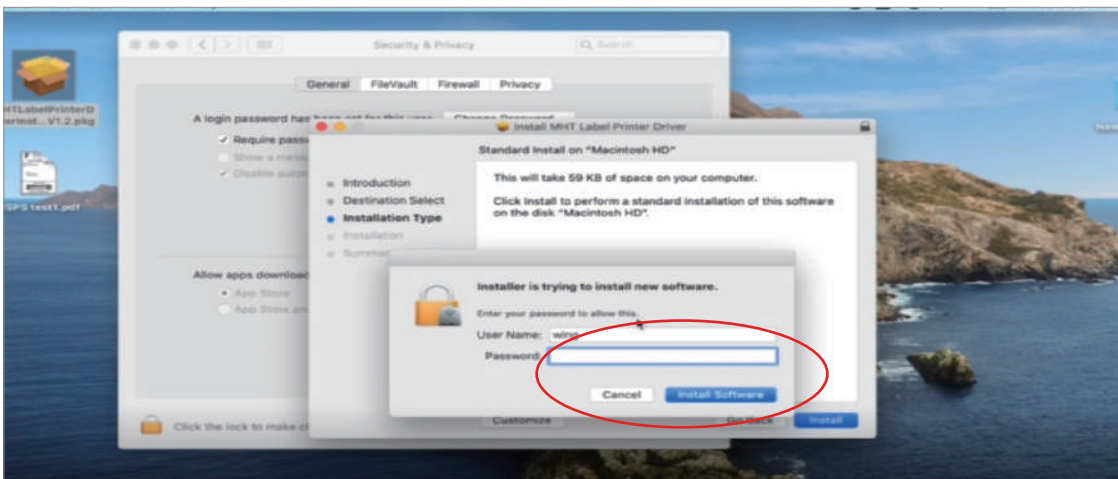
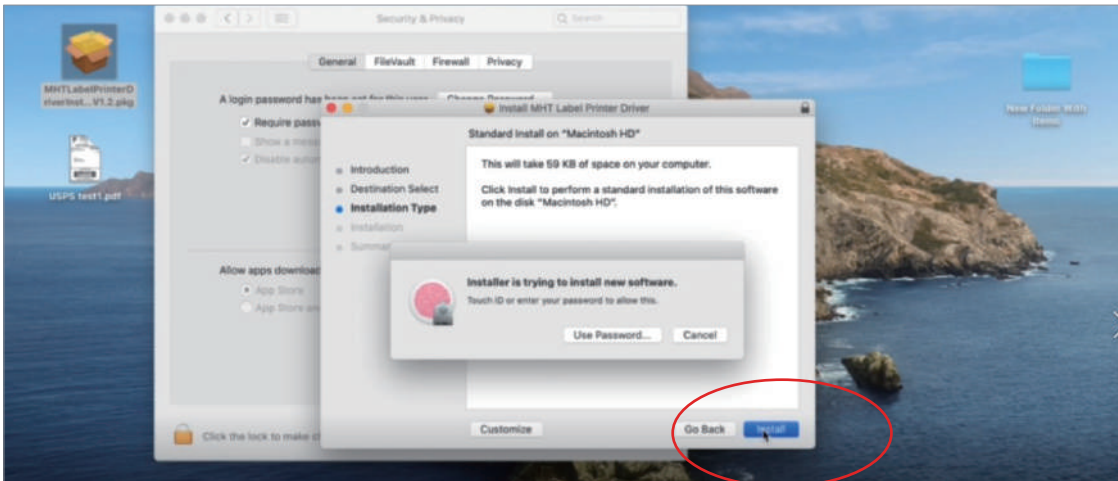


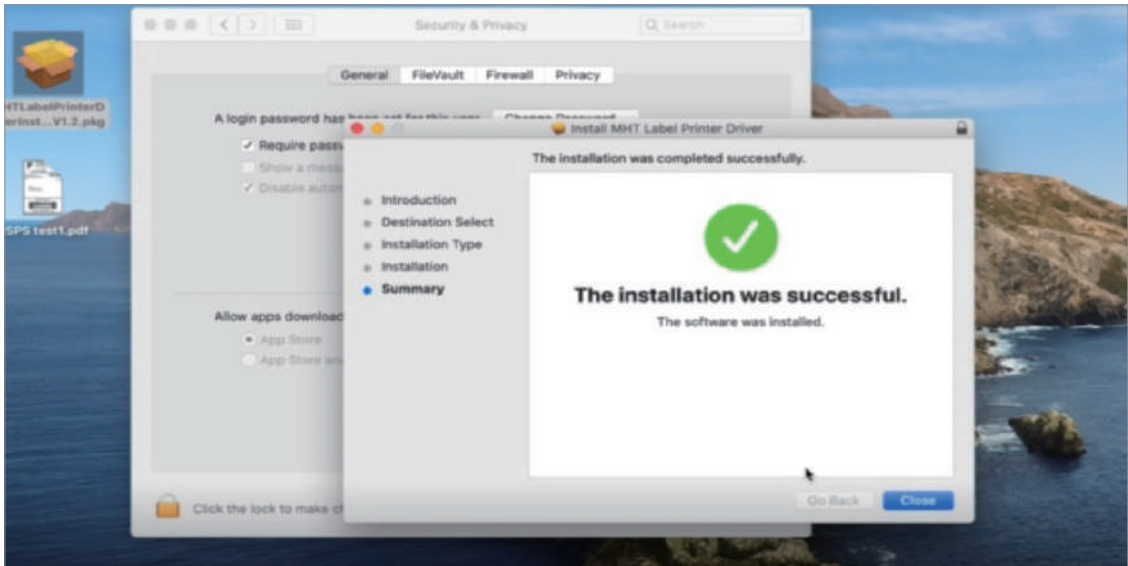
Step 6: Open the installation file, continue to install



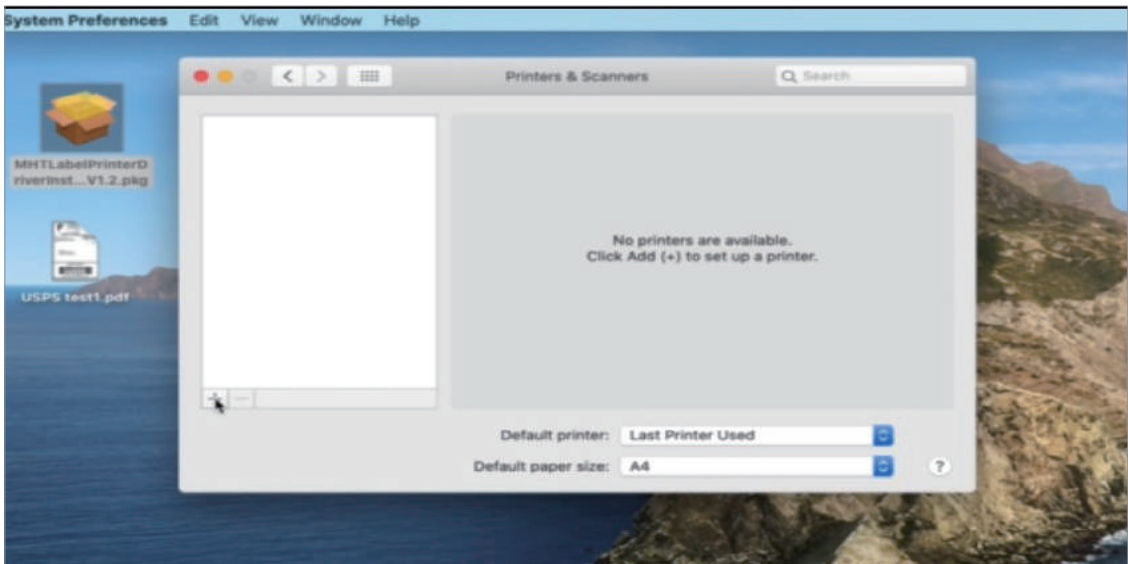


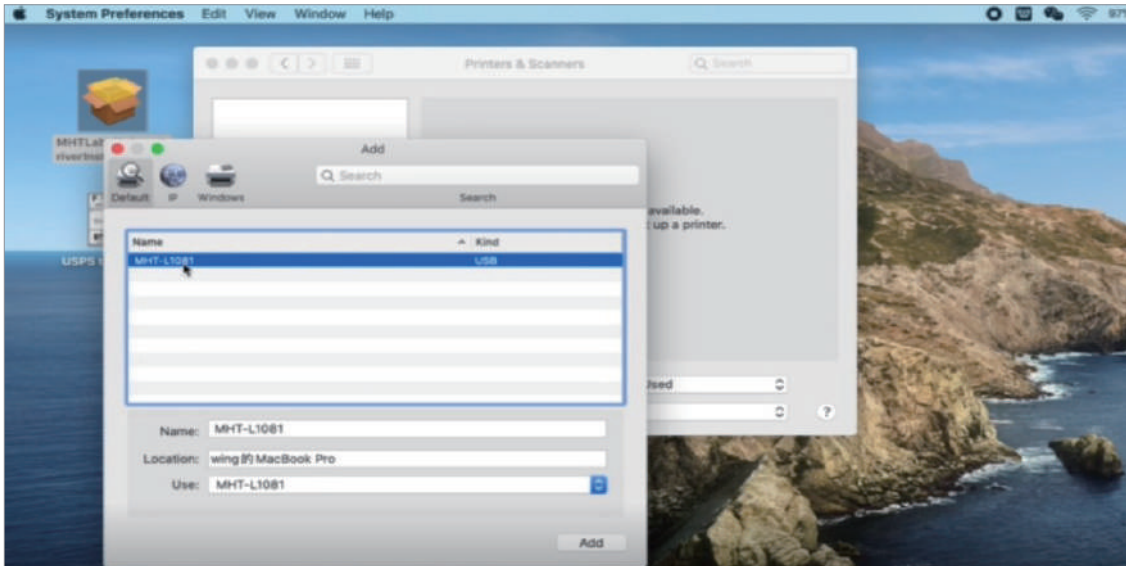
Step 7: Enter user name and password, finish the installation.



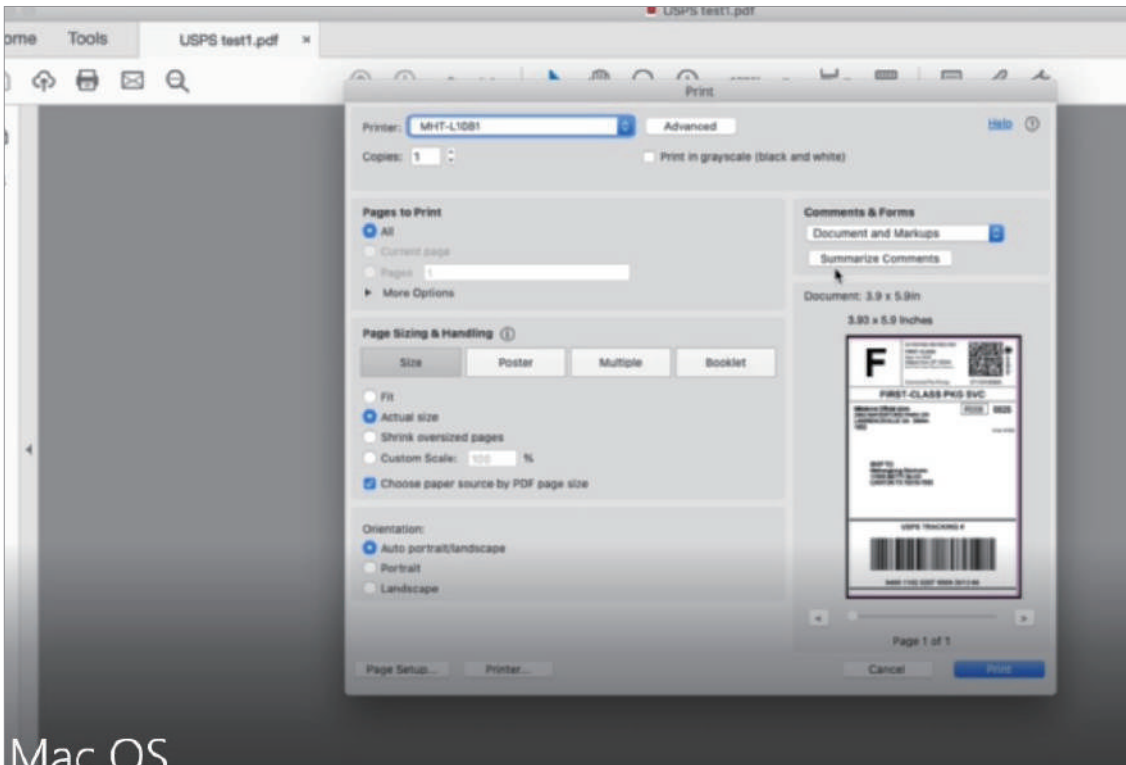


Step 8: Find the printers and scanners, add printer L1801





Step 8: Open the file need to print, choose the printer L1801 and the paper size you need, then click to print.



Mac OS

Part 3 : Others

Notice:

1. The shipping label printer doesn't support wifi or bluetooth. Use the USB cable to connect with PC or laptop.
2. No label holder or tray in the package. You can just put fan-fold label sheets on table.
3. This 4x6 thermal label printer is compatible with MAC OS 10.9, MAC OS 10.15, MAC OS 11, MAC OS XP, Linux(ubuntu), Windows 03,Windows 7,Windows 8, Windows 10.

Specification :

Printing method	Thermal line printer
Paper loading method	Easy paper loading/auto paper feeding
Printing speed	Actual speed detection: 127.38mm/s
Printing paper width	104mm
Effective resolution	203 dpi (300 dpi optional)
Paper type	Continuous paper, label paper, black label paper
Thickness of printing paper	0.06-0.18 mm
Effective printing width	Min 38mm Max 112mm
Character size	ASCII Font A: 12x24 ASCII Font B: 9x17 Chinese character 24x24
Interface type	USB
Power adapter	DC 24V — 2.5A
Working environment	Operating temperature: 0- 45°C, Operating humidity: 20-90%
Storage environment	Storage temperature:-10 ~ 60°C, Storage humidity: 10-90%

Troubleshooting :

The table below shows common problems and solutions for operators.

If you have followed the simple troubleshooting methods but the printer is still not functioning properly, please contact the customer service department of your dealer for assistance.

POWER indicator is off

Cause	Solution
a. The AC plug and the power supply plug are not properly connected to the printer socket.	a. Check the power connection and confirm that the AC plug and the power supply plug are properly connected to the printer socket.
b. The printer power switch is not on.	b. Turn on the printer.

Unable to print

Cause	Solution
a. The communication cable is not properly connected to the printer and PC host. b. Communication interface setting error. c. Print status error.	a. Reconnect the communication cable.

Incomplete print content

Cause	Solution
a. The paper is not centered.	a. Adjust the paper position.
b. Label size setting is incorrect.	b. Set the correct label size.

Incorrect positioning

Cause	Solution
a. Label learning is not performed.	a. Label learning is performed.
b. Seam label detection photocoupler is offset.	b. Open the cover to confirm whether the seam label detection component is offset. For black label paper, move the seam label detection component according to the black label position so that the detection photocoupler can detect the black label. Label paper/continuous paper The detection photocoupler must be in the paper range.

Cause**Solution**

c. Wrong mode selected.

c. Use the setting tool to open the printer information and confirm whether the paper type is the same as the paper loaded in the printer, which can be changed by using the setting tool.

Poor print result**Cause****Solution**

a. Paper loading error.

a. Reload the paper.

b. Print density/speed setting error.

b. Readjust the print density/speed of printer by using the setting tool or the software. Printing density can be coarsely tuned with the setting tool and finely tuned with the driver.

c. Print head/rubber roller has dust or adhesive accumulation.

c. Clean the print head/rubber roller. (refer to 8.1 "Cleaning Print Head"/82' Cleaning Sensor*78.3 "Cleaning Printing Rubber Roller of the Manual.)

d. The print head is damaged.

d. Use the setting tool to detect bad point of head piece. If the print head is damaged, please contact the customer service department of your dealer for repairs.



www.lockedair.com

info@lockedair.com